



INDOOR LED DISPLAY SOLUTION FOR RETAIL AND COMMERCIAL APPLICATIONS.

This sleek designed LED POSTERS are multifunctional, Cost effective and deliver High definition images.

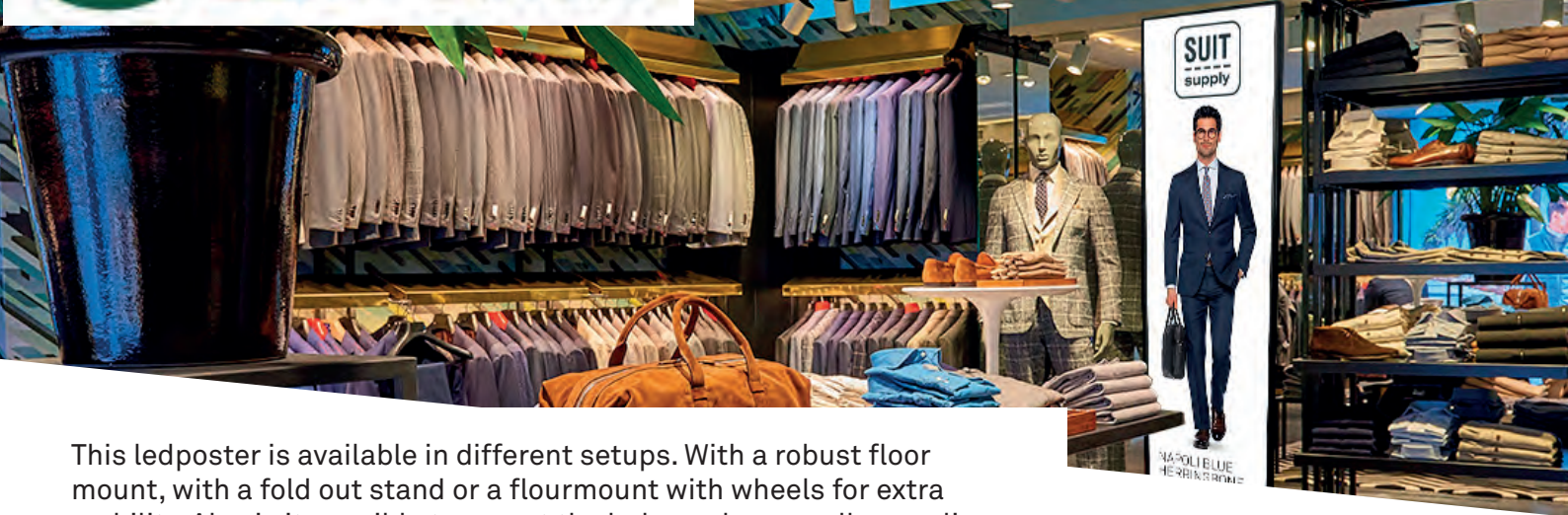
FEATURES

The poster is light weight (35kg), thin (40 mm) and is easy and fast to install. Ideal Point of sale product for your presentations.

APPEARANCE

The elegant appearance of the poster makes it a perfect tool for in shop presentations. It has an aluminium alloy frame, an acrylic protective glass surface and is available in different colors.





This ledposter is available in different setups. With a robust floor mount, with a fold out stand or a floormount with wheels for extra mobility. Also is it possible to mount the led panel on a wall or ceiling.



floor stand



fold-out stand



ceiling mount



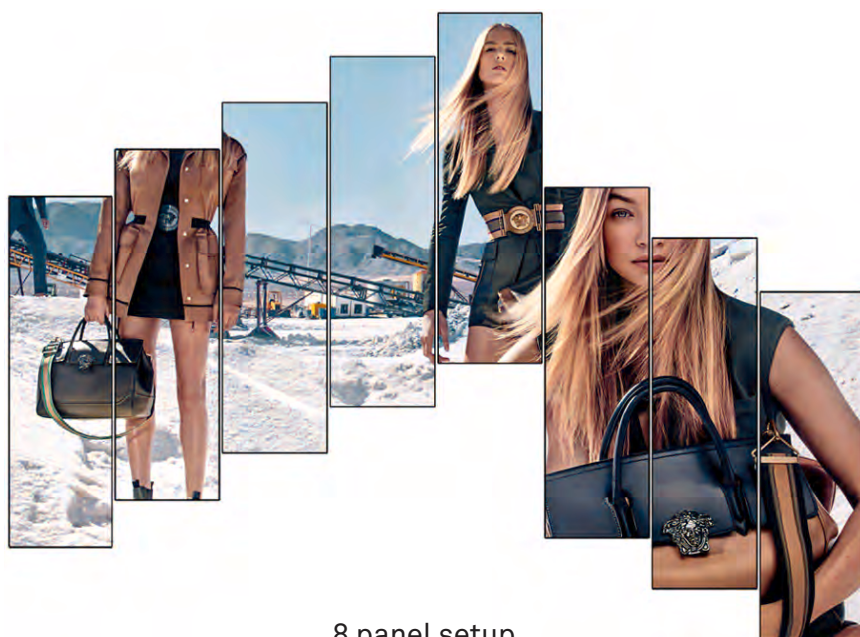
wall mount



floor stand with wheels



3 panel setup



8 panel setup



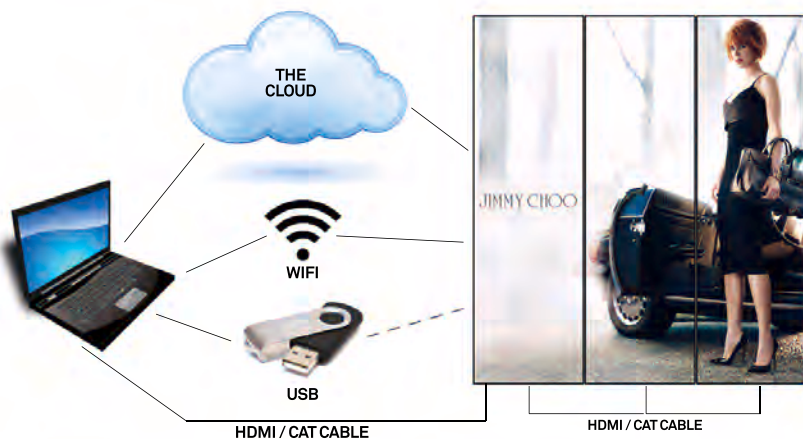
Besides single display work mode, multiple displays can be combined together to bring a variety of display effects and improve your advertising efficiency.

FEATURES

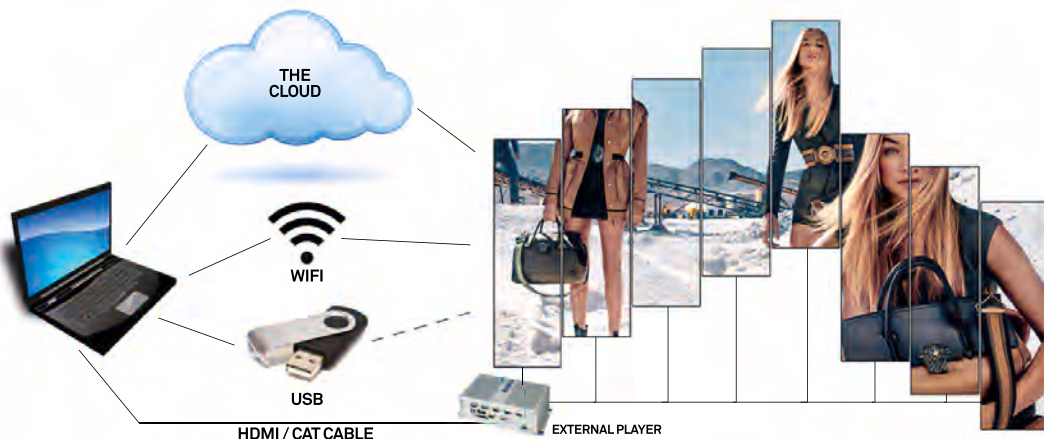
A setup in single display work mode is easy achievable without any alterations.



For a setup with up to 3 display panels there is also no extra player needed.



For a setup up to 8 panels is one external player needed to connect all the displays cascading through HDMI connection.





panel setup variations



Specifications:

OPTICAL PARAMETERS	72 inch	80 inch	89 inch
Model name	MIA	IVY	-
Pixel Pitch (mm)	2.604	2.571	2.571
LED Type	SMD	SMD	SMD
Pixel Density (pixel/sq.m.)	129024	169344	338688
Viewing Angle (H/V)	160° / 160°	160° / 160°	160° / 160°
Brightness(cd/sq.m.)	>800	>800	>800
Refresh Rate(Hz)	300~4000	300~4000	300~4000
Optimized Viewing Distance (m)	2.6~39	2.5~38	2.5~38

ELECTRICAL PARAMETERS

Average Power Consumption (W/screen)	210	210	210
Max. Power Consumption (W/screen)	600	600	600
Input Voltage	AC110V or AC220V±10% 50/60Hz	AC110V or AC220V±10% 50/60Hz	AC110V or AC220V±10% 50/60Hz
Input Interface	Ethernet / HDMI / USB	Ethernet / HDMI / USB	Ethernet / HDMI / USB

STRUCTURE PARAMETERS

Module Size in Pixel (W×H)	96×96	112×84	112×84
Module Size in mm (W×H)	250×250	288×216	288×216
Display Size in Pixel (W×H)	192×672	224×756	448×756
Display Size in mm (W×H)	500×1750	576×1944	1152×1944
Overall Dimension in mm (W×H×D)	520×1770×65	596×1964×65	1172×1964×65
Weight (kg)	28	36	80
IP Rating	IP40 Front / IP40 Rear	IP40 Front / IP40 Rear	IP40 Front / IP40 Rear
Processing	12 Bits	12 Bits	12 Bits

OPERATION PARAMETERS

Maintenance	Rear	Rear	Rear
Operating Temperature	-10°C~50°C	-10°C~50°C	-10°C~50°C
Operating Humidity	10~90RH%	10~90RH%	10~90RH%
Certification	CE / ETL / FCC	CE / ETL / FCC	CE / ETL / FCC

